

Topcon Agriculture Announces TAP Update, v3.2

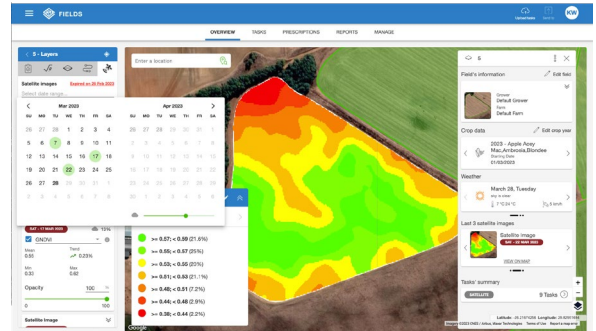
TAP v3.2, the latest version of Topcon agriculture digital farm management ecosystem, enhances existing workflows, while bringing new subscription options for satellite-imagery based field insights and dairy feed management.

Workflow Enhancements

- TAP FEED - Improved "Get Help" section

Backoffice Management Improvements

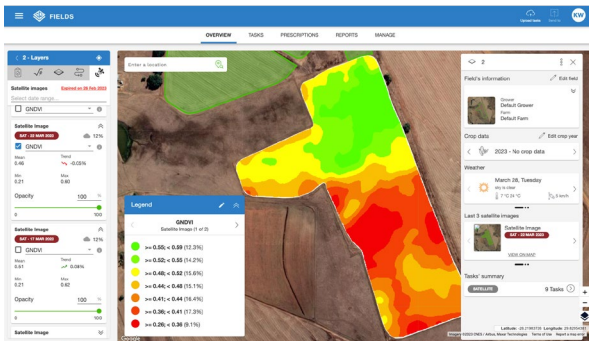
- Custom prices for dealers
- New countries added for Distributors – enables independent setup – Including Israel, Peru, Bolivia, Costa Rica, Uruguay, Columbia, and many African countries



TAP Satellite Imagery – New TAP Fields/Pro Addon

Satellite imagery helps measure crop and field health for relevant insights that mitigate risk; the technology provides active monitoring, a record to track development, and can help guide key applications. Topcon now offers:

- Imagery types for vigor, chlorophyll and moisture
- High resolution (10 meter-spatial) imagery delivered every five (5) days with straightforward 1-year subscription term
- Imagery seamlessly added to TAP Fields/Pro account
- TAP ecosystem integration and complementary Topcon solutions



TAP FEED Pro – New TAP FEED Subscription

Specially designed for dairy operations, TAP FEED Pro builds upon TAP FEED Lite features to offer advanced ingredient, recipe/pre-mix, pen, operator, and dry matter efficiency (DME) management, with automated refusals, zone control, expanded reports, and enhanced sharing tools.

- Designed for dairy operations
- All TAP FEED Lite features, plus advanced dairy features
- Dry matter efficiency reporting
- Supports different recipe types
- Zone control
- Extended report formats



TAP FEED Inventory Manager – New TAP FEED Addon

Provides tools to manage and track feed inventory, including input ordering features, ingredient and inventory management, re-ordering system, weighbridge (third party connection), inventory alerts, and inventory reports.

**TAP FEED Link – New TAP FEED Addon**

Connect any TAP FEED subscription to third party feed management software and technology (e.g. herd management, milking robotics, concentrate boxes, feed suppliers, and more).

For additional Marketing resources, check-out the MarketingHUB:

[Digital Farm Management MarketingHUB](#)

For additional learning resources, access Topcon eLearning or Technical Release Notes:

[TAP FEED Pro Features Overview](#)

[ADD-ON TAP FEED Link Overview](#)

[TAP FEED Inventory Release Notes](#)