



## TAP FEED Intermediate Release Notes

### November 2nd, 2023

#### Introduction:

- For TAP FEED, we are doing an intermediate release to address a few important market needs that cannot wait until the release of TAP 3.4
- Main items in this intermediate release are:
  - New dashboard widgets
  - Flow and performance improvements
  - INVENTORY ADD-ON improvements
  - LINK ADD-ON improvements (3rd party integration)

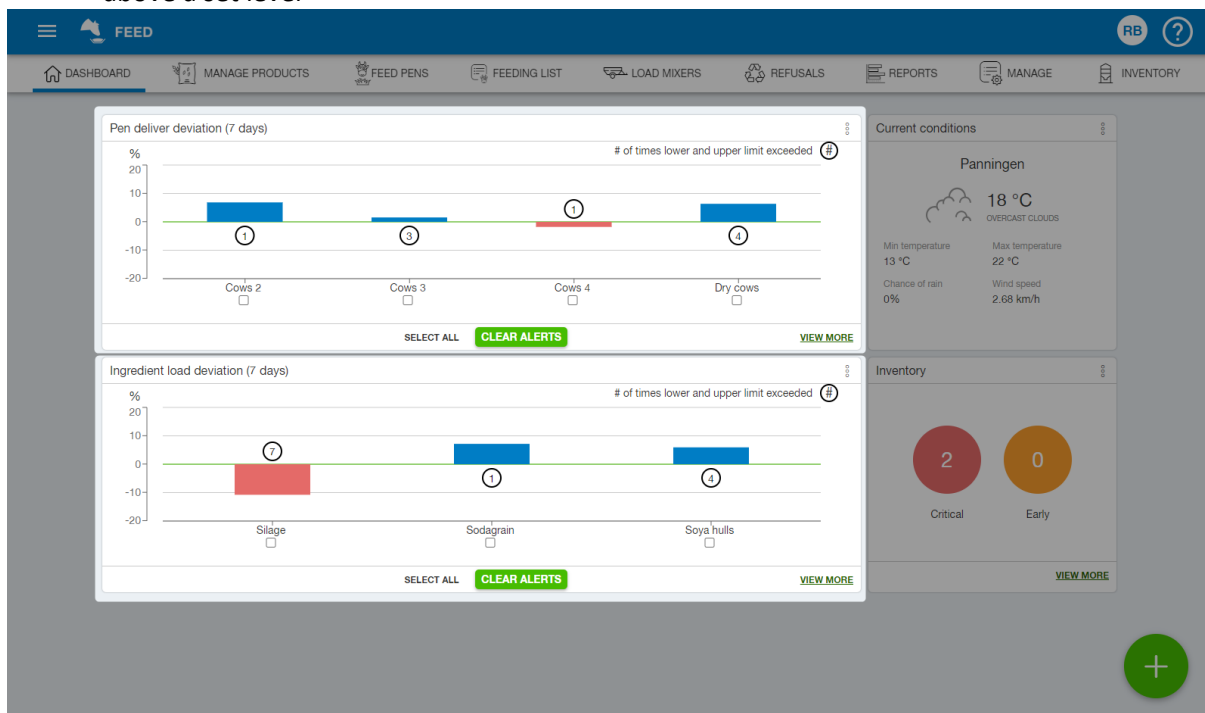
#### TAP FEED:

#### DASHBOARD (Pro only):

##### INGREDIENT LOAD DEVIATION AND PEN DELIVER DEVIATION DASHBOARD WIDGETS

Two widgets have been added for users with permission to use the dashboard in TAP Feed.

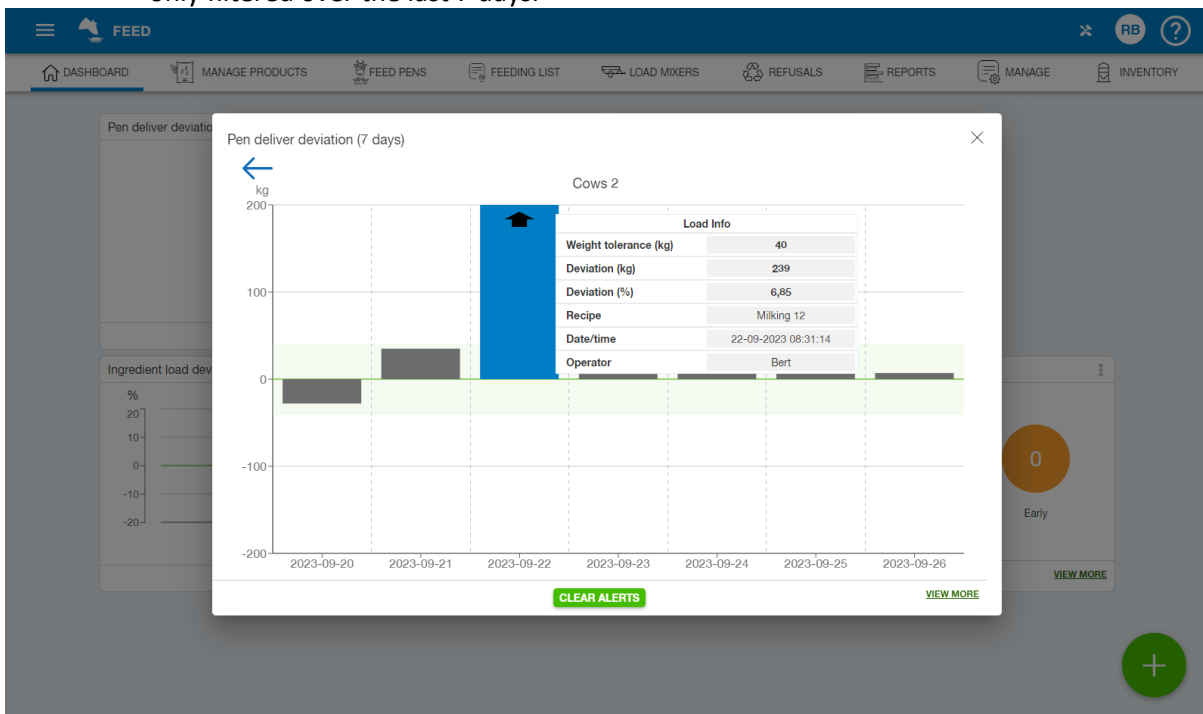
- Ingredient load deviation widget: Get alerts when the loaded amount of an ingredient is below or above a set level
- Pen delivery deviation widget: Get alerts when the delivered amount to a pen is below or above a set level



- To trigger the alerts, the settings with ingredients, premixes and pens must be set correctly. Edit the ingredients, premixes, and pens that you want to be triggered by setting the 'Show alert on deviation dashboard widget' to ON and enter the required weight tolerance level. Once the level is set, the system will generate alerts for the loads/deliveries with an amount below or above the set level, and this will also happen when loads are processed from the mixer.



- The size of the widgets can be changed through the three dots. Three sizes available (XS, S or L) show less or more information about the alerts.
  - XS size will only show the number of ingredients/pens with alerts, and clicking the circle with the number will show the individual ingredients/pens to analyse further
  - S size will show the number of ingredients/pens with alerts and if the last alert of each ingredient/pen was an upper or lower alert. Clicking the circles with the numbers will show the individual ingredients/pens to analyse further
  - L size will show the individual ingredients/pens in a graph with the load deviation percent of the last deviation shown and a circle that indicates the # of times lower and upper limit exceeded the last 7 days. A hover over the graph bar can be used to view the load details of the last alert, and clicking the graph bar or circle will show all loads/deliveries of the specific ingredient/pen over the last 7 days (not only the alerts). The popup shows the deviation weight in a graph together with the tolerance weight in green. The loads/deliveries that exceed the graph will have an arrow show to indicate this. A hover-over will show each load/delivery detail, and clicking a bar will open the load report filtered for that specific day. The view more button will open the load report only filtered over the last 7 days.



- If the alerts are considered to be seen, it is possible to clear alerts. This action to clear the alerts will only hide the loads/deliveries from the dashboard, and as soon as the ingredient/pen is triggered again, all alerts over the last 7 days will be generated again.

**MANAGE PRODUCTS:**

**[MANAGE PRODUCTS][RECIPES] MAXIMUM RECIPE TRANSITION STEPS INCREASED FROM 10 TO 99**

- The maximum recipe transition steps have been increased from 10 to 99 to prevent multiple recipes from needing to be created.

**[MANAGE PRODUCTS][INGREDIENTS] THE USER CAN SWITCH TABS IN EDIT MODE**



- While editing an ingredient with inventory active, it is possible to switch between the general and inventory tab in edit mode now. When changes have been made, these must be saved before navigating to the other tab.

**[MANAGE PRODUCTS][RECIPES/PREMIKES] DM% COLUMN ADDED**

- The dry matter % data of the individual ingredients has been added to the recipes/premixes. This is in view mode, edit mode and on the downloads.

**[MANAGE PRODUCTS][PREMIKES]+[RECIPES] MIXER COMMANDS SHOWN IN VIEW MODE**

- The mixer commands set with recipe ingredients and premixes are now shown in view mode.

**FEED PENS:**

**[FEED PENS][EDIT FEEDING] FLOW IMPROVED OF APPLYING LOAD TO FEEDINGS 2-9 IN EDIT MODE**

- By default, all feedings are shown in edit mode to improve the flow of scheduling a feeding with a pen.

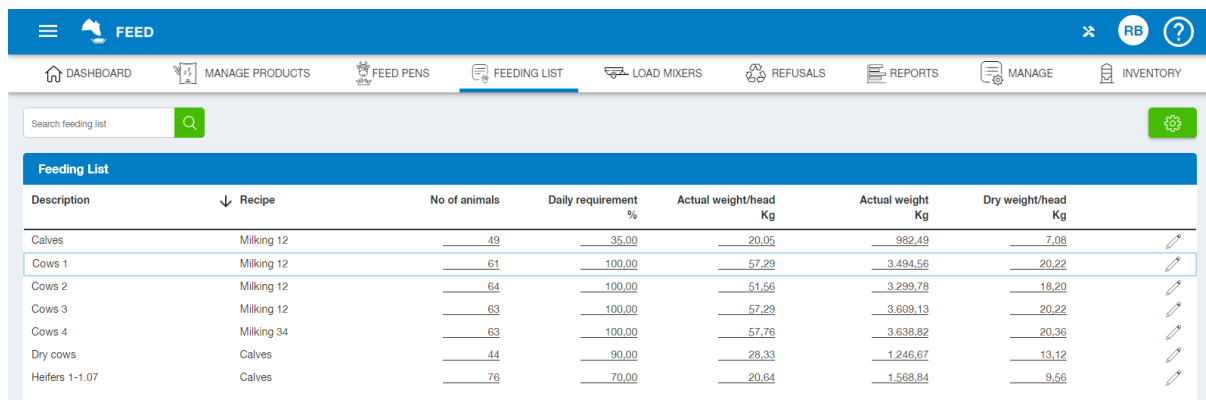
**[FEED PENS][EDIT FEEDING] ABILITY TO CHANGE PEN RECIPE WITHOUT CHANGING PLACEMENT IN DELIVERY ORDER**

- When the recipe schedule with a pen is changed in the same edit session, the placement in the delivery order will not change. This is to prevent the order from being set correctly again after making changes.

**FEEDING LIST:**

**[FEEDING LIST] ROW HIGHLIGHT HAS BEEN ADDED**

- For easier review, this area now has the option to have a row highlighted once clicked. Pressing the ENTER key will highlight the next row.



Description	Recipe	No of animals	Daily requirement %	Actual weight/head Kg	Actual weight Kg	Dry weight/head Kg
Calves	Milking 12	49	35,00	20,05	982,49	7,08
Cows 1	Milking 12	61	100,00	57,29	3.494,56	20,22
Cows 2	Milking 12	64	100,00	51,56	3.299,78	18,20
Cows 3	Milking 12	63	100,00	57,29	3.609,13	20,22
Cows 4	Milking 34	63	100,00	57,76	3.638,82	20,36
Dry cows	Calves	44	90,00	28,33	1.246,67	13,12
Heifers 1-1,07	Calves	76	70,00	20,64	1.568,84	9,56

**LOAD MIXERS:**

**[LOAD MIXERS] ADD TO BASE RECIPE WITH PREMIX IMPROVED**



- When the ATBR concept is used with a premix as the base recipe, the premix-ATBR load will have the individual ingredients loaded, but a load-only ATBR will have the premix ingredient loaded. The required premix amount calculations have been improved for this concept.

## REPORTS:

### **FILTER ADDED TO 'INGREDIENT & PREMIX USAGE' REPORT**

- The load report now also has the option to filter the loads based on the users (operators)

### **TOP LABEL LINE LOCKED ON REPORTS FOR EASIER VIEWING**

- The Ingredient Usage by Pen report & Operator Accuracy report now have the top label line locked for easier viewing

### **DELIVERIES WITHOUT LOADS ARE NOW DISPLAYED ON REPORTS**

- Deliveries without loads are now displayed on reports. Before, these would not be visible.

## INVENTORY ADD-ON:



### **[INVENTORY][WEIGHBRIDGE] DELETING MULTIPLE TICKETS AT ONCE SUPPORTED**

- When weighbridge tickets that should not be processed for ingredient inventory have been imported, it is possible to delete multiple tickets at once now.

### **[INVENTORY][OVERVIEW] [PROJECTED REQUIREMENTS] +**

- For easier review, these areas now have the option to have a row highlighted once clicked.

Description ↓	Inventory %	Average daily usage	Expected out of inventory	Days left	Dry matter %	Max inventory	Inventory	Dry inventory	Price (£) / Unit	Unit	Total price	Order date
Corn Silage	93.39 %	0.00	-	-	50.00	88.47	82.62	41.31	60.00	Tonne	4,957.08	ORDER
grass	88.37 %	0.00	-	-	50.00	76.18	67.32	33.66	50.00	Tonne	3,365.80	ORDER
med	0.00 %	0.00	-	-	50.00	0.00	-0.81	-0.41	0.00	Tonne	0.00	ORDER
Minerals	0.00 %	0.00	-	-	50.00	0.00	-5.01	-2.50	50.00	Tonne	-250.25	ORDER
Refusal 2	0.00 %	0.00	-	-	50.00	0.00	-0.37	-0.18	0.00	Tonne	0.00	ORDER
Refusal group 1	0.00 %	0.00	-	-	50.00	0.00	-0.20	-0.10	50.00	Tonne	-9.95	ORDER
soya	0.00 %	0.00	-	-	50.00	5.00	-18.66	-9.33	100.00	Tonne	-1,865.00	ORDER
Water	0.00 %	0.00	-	-	0.00	0.00	0.00	0.00	0.00	Kg	0.00	

### **DAILY SHRINKAGE NOW PERFORMED CONSEQUENT WHEN SET TO EVERY DAY**

- Under specific configuration, daily shrinkage was not performed consistently. This has now been improved.

## LINK ADD-ON:



### **[MANAGE][SETTINGS][THIRD PARTY INTEGRATIONS] 3<sup>RD</sup> PARTY INTERGRATIONS NOW AVAILABLE WITH LINK ADD-ON**

- The 3rd party integrations are now available when the LINK ADD-ON is activated.