



TAP FEED mobile app version 2.1 release notes

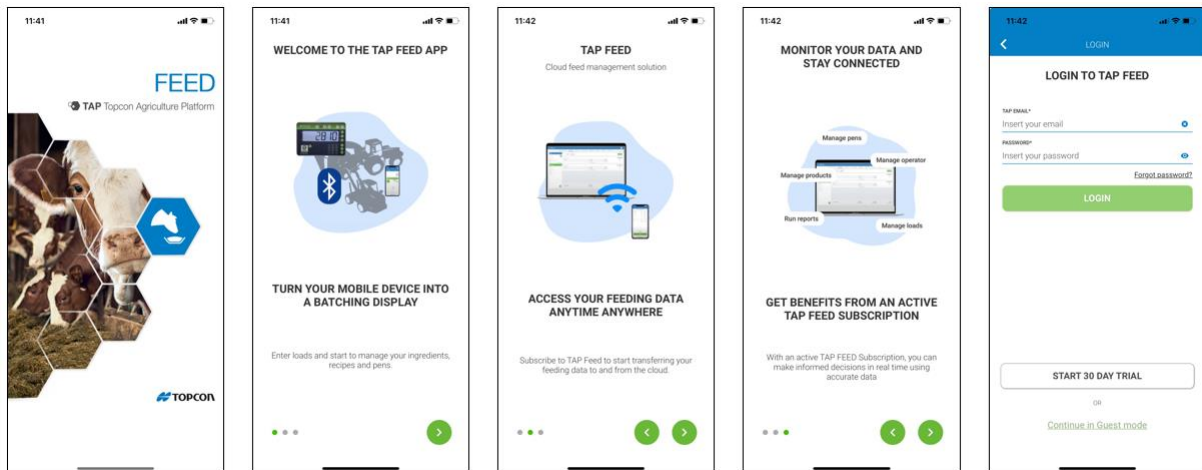
March - 2024

Introduction:

- The TAP FEED mobile app for iOS and Android is a field-proven, user-friendly and affordable feed management tool for all sizes of dairy and beef farms.
- The new TAP FEED mobile app version 2.1 offers enhanced functionality, including improved TAP FEED integration (TAP FEED subscription required) and an improved onboarding process.
- The FEED mobile app continues to be a free download and will also continue to offer the free “Guest” mode.

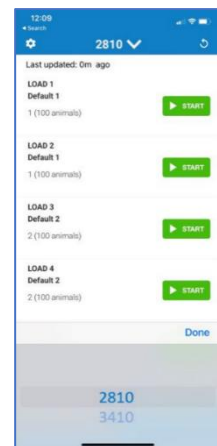
New FEED app functionality:

- **Improved On-Boarding process:**
 - We learned that customers are not always aware of what they sign up for when installing the FEED app. With this new onboarding flow, we try to create more awareness of what they are signing up for and guide them through the steps when signing up for TAP FEED.
 - If a customer still decides to use “Guest” mode only, he will see these onboarding screens again every four weeks to remind him to subscribe to TAP FEED.



- **Mixer selection when having two or more Bluetooth scales:**

- If a customer configures two or more feed mixers with a Bluetooth scale in TAP Feed, he can now select which mixer data should be received in the FEED app. In combination with assigning mixers to selected zones in TAP FEED, loads can now be optimized. This is, for example, important when the two mixers have different load sizes.

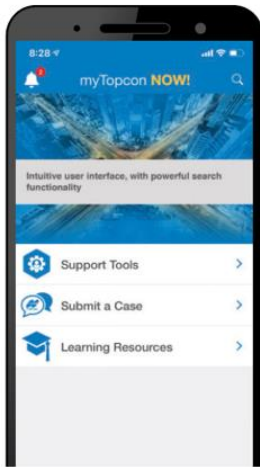




General improvements:

- **Target (Call) weight changes**
 - Improvements have been made to how target weights are reported back to TAP FEED. Any operator weight change (Resize) or auto weight change (e.g. First ingredient resize) will result in a new target weight used for calculating results in TAP FEED.
- **Scaling on tablets**
 - The FEED app was historically designed for mobile phones only, but with the release of 2.1, the FEED app now also sizes correctly on tablets.

MyTopcon NOW:



All support materials are available on the **myTopcon NOW!** Support App.

Scan the QR code below to access the Topcon Product Operator's Manual and additional resources.



Once logged into myTopcon NOW! Select these direct links to access critical resources:

- **Tap Feed subscription comparison / Tap Feed hardware capability charts:** [Home > Support Tools > Feed Management > Tap Feed](#)